

STFE™ AUTOMATED TIMBER TESTER

One button timber testing



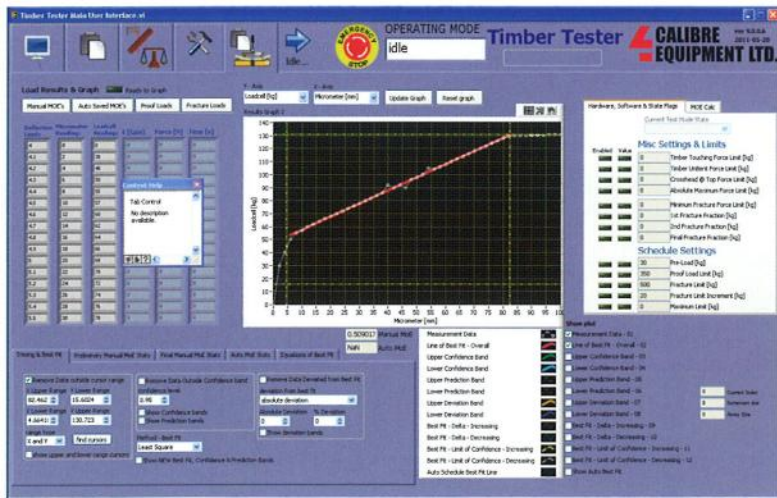
**Easy consistent timber testing
with realtime data**

Chris Taylor
Office: 912.366.9848
Mobile: 912.278.4042
Christ@baxleyequipment.com

Chris Raybon
Office: 501.623.0065
Mobile: 501.318.9559
Chrisr@baxleyequipment.com

STFE™ AUTOMATED TIMBER TESTER

The automated STFE™ timber tester is the easiest and most consistent way to test timber. The testing process is fully automated and controlled by a computer and software. The software is packed with features to enable detailed testing information to be captured and analysed.



- Non contact laser deflection measurement
- Powered 2 stage hydraulic pump for perfect loading control
- Fully automated PLC control for loading rate, MoE, proof and fracture (MoR) testing
- PC user interface for ease of use and display of information
- Real time display of load/deflection curve
- Real time MoE measurement and R^2 analysis
- Data logging and tracability
- Customisable grade schedules
- User friendly sensor calibration
- Ability to upload testing data to TimberQual™, our web based quality assurance and verification management software
- Ability to link QA data to our Ecooustic™ Grader for feedback and grade threshold optimisation



Chris Taylor
Office: 912.366.9848
Mobile: 912.278.4042
Christ@baxleyequipment.com

Chris Raybon
Office: 501.623.0065
Mobile: 501.318.9559
Chris@baxleyequipment.com

